



Accessories for automated slide stainers for transportation, storage, and processing of preparations on slides



Applicable for cervical cytological screening

Rack-insert for 20 slides (RI-20) (Fig 1) designated for placing slides with cell samples taken from the patient, for example, during cervical cytological screening. The capacity of the RI-20 is 20 slides. For transportation of the RI-20 in the laboratory, the special protective containers are used (see Fig. 6-8):

- plastic suitcase for 10 pcs. RI-20 with a tray for accompanying documents (capacity of at least 200 A4 sheets);
- a box made of corrugated cardboard with ten sockets (for 10 RI-20 with slides);
- a box made of corrugated cardboard with five sockets (for 5 RI-20 with slides);
- a box made of corrugated cardboard with two sockets (for 2 RI-20 with slides).

The use of the rack-insert with special containers minimizes manipulations with slides and ensures the safety of preparations.

RH-20 racks-holders (Fig. 2) are used for processing preparations in automated slide stainers. Fastainer-12-25 (Fastainer-9-25 Fastainer-16-25).

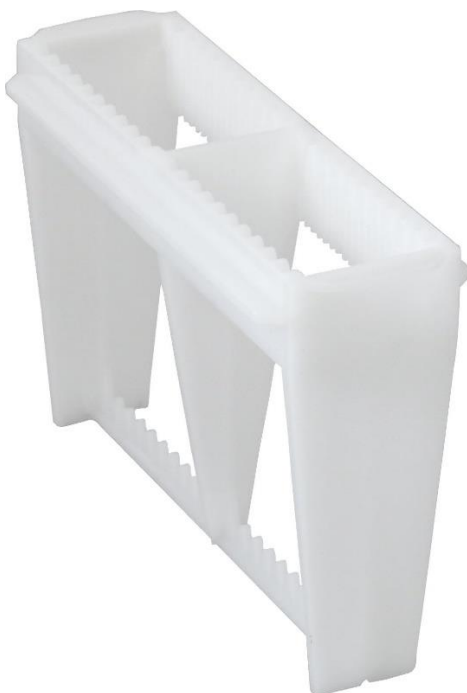


Fig. 1 Rack-insert RI-20-20 for 20 slides



Fig. 2 Rack-holder RH-20

In the laboratory, the rack-insert with slides (Fig. 3) are placed in rack-holders (Fig. 4). Without reloading the slides, RI-20 is loaded into the automated slide stainer, Fastainer-12-25 (Fastainer-9-25, Fastainer-16-25, Fastainer-16-COMBO, Fastainer-16-HISTO), where the preparations are stained according to a given program.



Fig. 3 Rack-insert RI-20 with slides

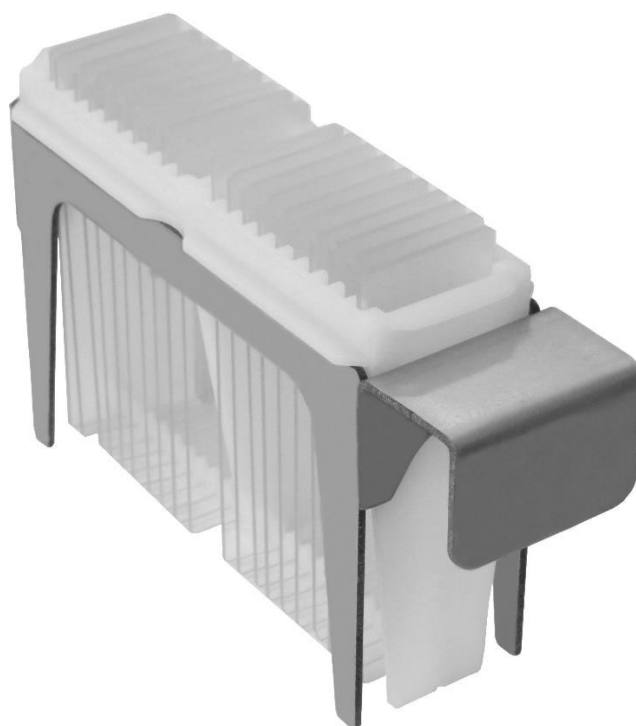


Fig. 4 Rack-insert RI-20 with slides, placed in Rack-holder RH-20

Rack-insert is designed so that the slots into which the glass is inserted are located above the reagent level when processing in the troughs of the slide stainer. The plastic of RI-20 is not subjected to swelling and corrosion in xylene and its substitutes. When staining preparations in RI-20, the transfer of liquid between the baths is reduced in comparison with solid stainless steel racks due to the low wettability of the plastic surface.

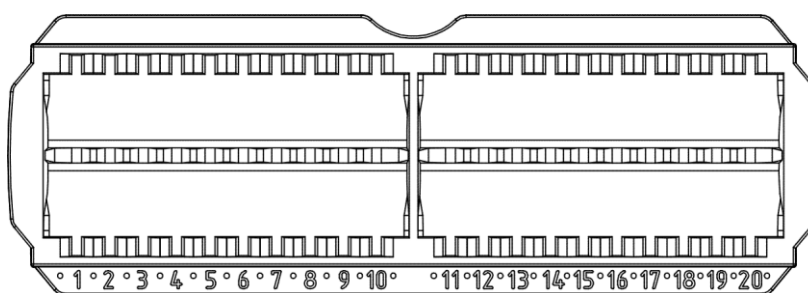


Fig. 5 Rack-insert RI-20 for 20 slides/ Top view.

In the upper part, RI-20 is equipped with two longitudinal stiffeners. On the upper surface of one of them, numbers from 1 to 20 are applied. The second stiffener has a gap in the middle to ensure error-free visual orientation when working with drugs.

RI-20 rack-insert is supplied only in protective containers (reusable or disposable). Protective packaging in the form of corrugated cardboard boxes, with minor wear, can be reused.



Fig. 6 Reusable protective container-suitcase for ten Rack-insert RI-20.



Fig. 7 Reusable protective container-suitcase in closed form.

In the closed suitcase, on top of the rack-inserts RI-20 with glasses, there is a tray (included in the kit) that holds the glasses during transportation, in which at least 200 A4 sheets with accompanying documents can be placed.



Fig. 8 Disposable protective packaging boxes on the 10 – 5 – 2 rack-inserts RI-20.

RI-20, RH-20 are accessories of automated slide stainers Fastainer-12-25 (Fastainer-9-25, Fastainer-16-25, Fastainer-16-COMBO, Fastainer-16-HISTO).

Revision 1.5 13.07.2021



MLT LLC Tehnologicheskaja str. 7, 141983 Dubna, Moscow region, Russia,
Phone: +7 (495) 287-81-00, WEB: www.fastainer.com, E-mail: mlt.llc@mail.ru